

Polyethylene Tank Stand

Assmann Modular Polyethylene Tank Stand

Patent No. US 8,814,110 B2

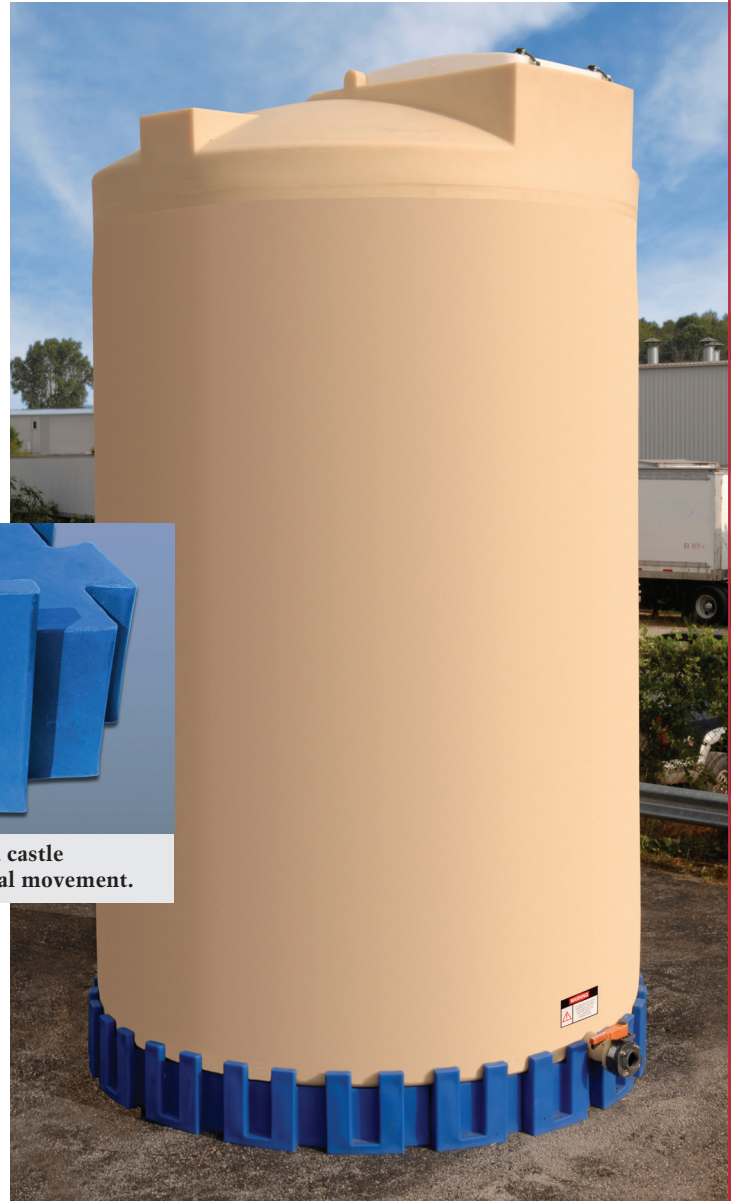
Assmann Corporation now molds modular polyethylene tank stands for use with the FDO (Full Drain Outlet) outlet assembly. These stands will elevate your polyethylene tank 12" from grade, giving you the ability to have a full drain tank without pouring expensive concrete.

Also beneficial –

- 100% chemical resistant and is suitable for all corrosive environments
- Lightweight modular sections can be easily disassembled and relocated to a different site
- Corrugated sidewalls for maximum support
- Dovetail joints for interlocking modular sections together
- Optional wind load anchoring points
- Raises tank bottom for flooded suction
- Can be installed on any suitable flat surface
- Wide range of color choices



Anchor points and raised castle projections restrain lateral movement.



Assmann Corporation has tested this stand to over 300,000 lbs. of crush force. This test was conducted using two 200,000 lb. hydraulic actuators and a custom-made load distribution fixture. The stand was loaded at a compression rate of 7,000 lbs. per minute to a load of 307,000 lbs. Multiple sensors were placed on the stand to record deflection and no deflection was found greater than a 1/16".

Part#	Description	Overall Dimensions			
		Dia.	Length	Width	Height
FDOTS48	48" Dia Tank Stand 57" OA Dia x 12" Height	48"	57"	57"	12"
FDOTS72	72" Dia Tank Stand 79" OA Dia x 12" Height	72"	79"	79"	12"
FDOTS96	96" Dia Tank Stand 104" OA Dia x 12" Height	96"	104"	104"	12"
FDOTS119	119" Dia Tank Stand 126" OA Dia x 12" Height	119"	126"	126"	12"
FDOTS143	143" Dia Tank Stand 149" OA Dia x 12" Height	143"	149"	149"	12"

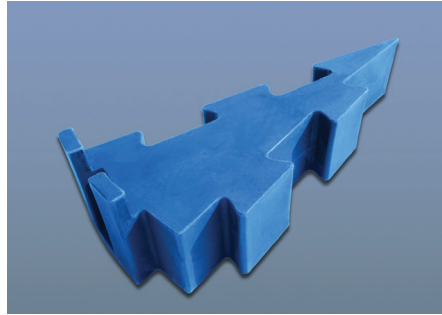
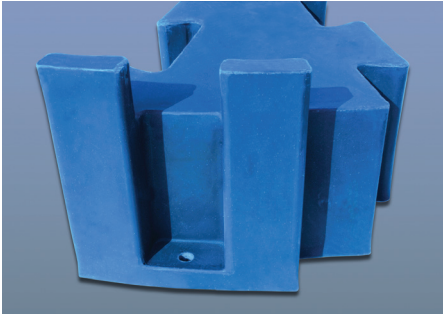


**Elevates polyethylene tank 12" from grade
Eliminates pouring expensive concrete**



Certificate Number:
DAS 90024930/39/Q Rev:001

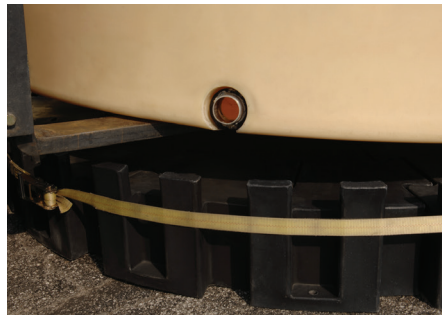
Assembly Instructions



Assmann Corporation will ship the modular tank stand on multiple skids. You need to select a suitable flat level surface that can support the weight of the tank, stand and chemical being stored. Start by placing the pie shaped pieces with the molded in edge facing upward. Two people can easily lift the interlocking pieces and slide them together as shown.



A total of twelve to eighteen pieces will be assembled in a circular pattern until the stand is completely assembled. Once assembled, the center pipe and center support plate must be installed. The next step is to wrap a strap around the tank stand and cinch the pieces together. This assures the stand is round by distributing even pressure around the circumference of the stand.



After the stand pieces are tight and the stand is positioned, the molded in anchor points should be utilized and the tank can be installed following our usage and handling instructions.



Assmann Corporation of America
300 N. Taylor Road, Garrett, IN 46738

Phone: 888-357-3181 • Fax: 888-Tank Fax (826-5329)

Phone: 260-357-3181 • Fax: 260-357-3738

E-mail: info@assmann-usa.com

Internet: www.assmann-usa.com

Manufacturing facilities in Garrett, IN and Marshall, TX

Authorized Distributor: